



go
east
of Edmonton

ROADTRIP ADVENTURE GAME!

June 4
to Aug 31,
2022

PLAY & WIN Over \$6000 in Prizes!

Win the Awesome Roadtrip Prize Packages!

What you can win – Fuel, Food, Dining, Beverages, Shopping, Gifts, Golf, Camping, Accommodations, Attractions Passes, Cash and much more! See www.GoRoadtripGame.ca for complete details.

Use the next 7
pages as your

GAME GUIDE

What's included:

- Map of Participating Communities
- How to Play & How to Enter
- Northeast Gameboard
- Northeast Sticker Stations
- East Gameboard
- East Sticker Stations
- Southeast Gameboard
- Southeast Sticker Stations

MAP LEGEND

GO NORTHEAST
ORANGE HWYS
GO EAST
YELLOW HWYS
BLUE HWYS
GO SOUTHEAST
RED HWYS
GREEN HWYS



Map not to scale.

Have fun all summer long!

**You have 3 months to
play the GAME!**

**FIND THE STICKER STATIONS
AT THE HIGHLIGHTED COMMUNITIES & WATCH FOR SIGNS!**

**GAME
GUIDE**

MCS
NET

CANALTA
HOTELS

RULES FOR THE ROADTRIP ADVENTURE GAME

Over \$6000 in Prizes to be won in 2022!

HOW TO PLAY >>>

1. Signup online to get **BONUS PRIZES**

www.GoRoadtripGame.ca

Why signup? A) It's very important – any changes and updates in the Game will be sent to you. We are planning some special promotions and new surprises for the Game – **so sign up and you won't miss out!**

B) Every player who signs up will be entered in for Bonus Prizes!

We will be announcing over \$1000 in Bonus Prizes in 2022.

2. Plan a fun Roadtrip with your family using this Travel Guide or our website. You can choose one or all of the regions and Go! See the Game Map. **Go Northeast...Go East...Go Southeast of Edmonton!**

3. You and your kids can collect FREE fun Icon Stickers at the Sticker Stations in 47 Communities. See the Sticker Station pages for details.

The Game starts June 4 and ends August 31, 2022.

4. Use the Gameboards in this Special Section.

You must present your Gameboard at the Sticker Stations to collect your sticker. Note: the maximum number of Gameboards per family is 4.

Download extra Gameboards at www.GoRoadtripGame.ca

5. Sticker Stations close August 31, 2022 – but you have until September 7, 2022 to upload your Gameboards and enter for the prizes.

6. Don't delay your entries - each month we will draw **Bonus Prizes** from the people who have already entered Gameboards. Check the **Wall of Fame** and see who's entered and see some great photos from this year's game!

7. Questions? Call 1-888-632-8755 weekdays.
Email: info@goeastofedmonton.com anytime.



Terms & Conditions: The Roadtrip Adventure Game is FREE to play. No purchase is necessary to collect stickers and enter for prizes. Minors (school age children) can participate in the game, but the parents must provide consent and/or enter in the Gameboard. Winners are required to have their photos published. Email us if there is an issue playing the Game. Game rules and prize categories are subject to change for the betterment of the Game. For the Comprehensive Game Guide visit www.GoRoadtripGame.ca

HOW TO ENTER & WIN >>>

Three ways to play and enter..it's EASY!

A) GAMEBOARD ENTRIES

Collect stickers, apply them to the correct box, and enter once you have 7 or more stickers. To enter, you sign your Gameboard and take a close up picture of your gameboard and upload it at: www.GoRoadtripGame.ca between June 4 and September 7, 2022.

PRIZES for Gameboard Entries:

3 - Lucky 7 Prizes

Once you have any 7 stickers collected on one gameboard, you can enter your gameboard for a **minimum \$100 prize package.**

3 - Regional Prize Packages

Get all stickers from a region and you can enter your completed gameboard for a **minimum \$600 prize package** and each regional winner gets a Champion Checkered Flag.

1 - Blackjack Prize Package

Get a total of 21 stickers collected which is 7 stickers from each of the 3 regions and you can enter your gameboards for a **minimum \$700 prize package** including a Champion Checkered Flag.

1 - King or Queen of the Road Ultimate Prize Package

You get every community sticker on all 3 gameboards and you can enter for the Ultimate Prize Package of **over \$1500** and a Champion Checkered Flag.

A Bonus Prize for completing a Gameboard will be announced.



B) SOCIAL MEDIA ENTRIES

Post your trip daily with our hashtags to enter for monthly and bonus prizes: use **#goroadtrips2022** and **#goeastofedmonton**

Enter as many times as you want between June 4 - August 31, 2022.

Note: you do not have to collect stickers to enter on social media or the Photo Contest. Any type of leisure trip **in our region** will qualify to enter.

PRIZES for Social Media Entries: We are giving away a minimum of \$200 in prizes monthly - June, July & August. There will be a prize for the person who makes the most social media posts of their trips.

C) PHOTO CONTEST ENTRIES

Your roadtrip photos will automatically be entered in our 2022 Photo Contest using our hashtags **#goroadtrips2022** and **#goeastofedmonton**

PRIZES for Photo Contest Entries: You could win up to \$500 in cash prizes. Full contest details at www.GoEastofEdmonton.com/Photo-Contest

Plamondon -
Lac La Biche Region



Lac La Biche Region



Town of St. Paul



Town of Elk Point



Village of Glendon



Town of Bonnyville



Athabasca Region



2022

Smoky Lake Region



NORTHEAST OF EDMONTON

Over \$6000 in Prizes!
3 WAYS TO WIN

1. Collect stickers and enter partial or completed gameboards
Take a close up photo of your Gameboard and upload it to:
www.GoRoadtripGame.ca

2. Post your trip daily with our hashtags for monthly and bonus prizes:

Use #goroadtrips2022
and #goeastofedmonton



3. Your trip photos will be automatically be entered in our 2022 Photo Contest (using our hashtags)



Complete Game Rules
& Prize Details:

www.GoRoadtripGame.ca



SIGN YOUR
GAMEBOARD
HERE

Name of Player: _____

M.D. of Bonnyville



City of Cold Lake



go 2022

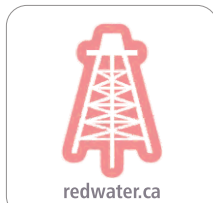
Village of Waskatenau



Thorhild County



Town of Redwater



Town of Legal



Town of Bon Accord



Town of Gibbons



go NORTHEAST OF EDMONTON

STICKERS STATIONS: Collect stickers at these locations for your gameboard

Enter using [#goroadtrips2022](#) and [#goeastofedmonton](#)

For Complete Game Rules & Prize Details: www.GoRoadtripGame.ca

MCS NET

CANALTA
HOTELS

TOWN OF GIBBONS

[#gibbons](#)



Sticker Station -
Gibbons Petro Canada
4820 - 50 Ave.
Open Daily 8am-9pm
780-923-2221

25 min from Edmonton

TOWN OF BON ACCORD

[#bonaccord](#)



Sticker Station -
Chelsea's Family Restaurant
& Pub
4930 - 50 Ave.
Open Mon-Sat 10am-9pm
Sun 12-9pm
780-921-2233
20 min from Edmonton

TOWN OF LEGAL

[#townoflegal](#)



Sticker Station -
Legal Super Mart
4743 - 50 Ave.
Open Mon-Fri 8:30am-8pm
Sat-Sun 9am-7pm
780-961-3332

30 min from Edmonton

TOWN OF REDWATER

[#redwater](#)



Sticker Station -
Redwater Golf Club
4944 - 53 St.
Open daily 9am-8pm
780-942-3993

35 min from Edmonton

THORHILD COUNTY

[#thorhildcounty](#)



Sticker Station -
Nook in the Woods
59204 Rg Rd 223
Open 6 days a week
10am-6pm
Closed Tuesdays.
780-398-2075
50 min from Edmonton

VILLAGE OF WASKATENAU

[#waskatenau](#)



Sticker Station -
T&T Iron Horse Restaurant
Hwy 28 at Waskatenau
Open Mon-Thurs 11am-9pm
Fri-Sun 8am-9pm
780-358-2333

1 hr and 15 from Edmonton

SMOKY LAKE REGION

[#smokylakeregion](#)



Sticker Station -
Smoky Lake Esso
Next to the Super 8
Hwy 28 & 44 Ave.
Open daily 8am-9pm
780-656-3738

1.5 hrs from Edmonton

ATHABASCA REGION

[#athabasca](#)



Sticker Station -
A Little Bit of Everything
#101, 5003 - 50 St., Athabasca
Open Mon-Fri 10am-6pm
Sat. 10am-5pm
Sun 11am-4pm
780-213-2111

1.5 hrs from Edmonton

PLAMONDON - LAC LA BICHE REGION

[#plamondon](#)



Sticker Station -
North Country Co-op Gas Bar
9917 - 102 Ave.
Open Mon-Sat 8am-8pm
Sun 9am-5pm
780-798-3771

2 hrs from Edmonton

LAC LA BICHE REGION

[#laclabicheregion](#)



Sticker Station -
Lac La Biche Museum &
Visitor Information Centre
9910 - 101 Ave., Lac La Biche
Open daily 9am-6pm
780-623-2818

2 hrs and 15 min from Edmonton

ST. PAUL REGION

[#stpaulab](#)



Sticker Station -
Visitor Information Centre
5012 - 53 St.
Open Tues-Sun 10am-6pm
780-645-6800

2 hrs from Edmonton

TOWN OF ELK POINT

[#elkpointchamber](#)



Sticker Station -
HomeTown Grocers
5022 - 50 St., Elk Point
Open daily 8am-9pm
780-724-3776

2.5 hrs from Edmonton

VILLAGE OF GLENDON

[#glendon](#)



Sticker Station -
Korner Mart and Gas
203 Railway Ave.
Open Sun-Thurs 8am-8pm
Fri-Sat 8am-9pm
780-207-1460

2 hrs from Edmonton

TOWN OF BONNYVILLE

[#bonnyville](#)



Sticker Station -
Bonnyville Museum
4401 - 54 Ave.,
June: Mon-Fri 10am-4pm
Sat & Sun - Sticker Dispenser
July & Aug: open daily 10am-4pm
780-826-4925

2.5 hrs from Edmonton

M.D. OF BONNYVILLE

[#mdofbonnyville](#)



Sticker Station -
Ardmore Golf & Country Club
5105 - 50 St., Ardmore
Open daily 9am-9pm
780-826-4509

2 hrs and 45 min from Edmonton

CITY OF COLD LAKE

[#coldlake](#)



Sticker Station -
Cold Lake Marina
802 Lakeshore Drive
Open daily 8am-9pm
June thru August
780-639-2396

3 hrs from Edmonton

Note: Due to inclement weather - station hours are subject to change without notice.

Town of Bruderheim



Town of Lamont



Town of Mundare



Village of Andrew



Town of Two Hills



Village of Myrnam



Fort Saskatchewan



EAST OF EDMONTON



Over \$6000 in Prizes!
3 WAYS TO WIN

1. Collect stickers and enter partial or completed gameboards
Take a close up photo of your Gameboard and upload it to:
www.GoRoadtripGame.ca
2. Post your trip daily with our hashtags for monthly and bonus prizes:
Use #goroadtrips2022
and #goeastofedmonton
3. Your trip photos will be automatically be entered in our 2022 Photo Contest (using our hashtags)



Complete Game Rules
& Prize Details:
www.GoRoadtripGame.ca



**SIGN YOUR
GAMEBOARD
HERE**

Name of Player: _____

2022

Village of Kitscoty



Hamlet of Clandonald



Village of Marwayne



Town of Vermilion



Village of Mannville



Town of Vegreville



Strathcona County



Sherwood Park



go 2022

go EAST OF EDMONTON

STICKERS STATIONS: Collect stickers at these locations for your gameboard

Enter using [#goroadtrips2022](#) and [#goeastofedmonton](#)

For Complete Game Rules & Prize Details: www.GoRoadtripGame.ca



SHERWOOD PARK

#shpk



Sticker Station -

Sherwood Park Mall - Guest Services. Use DSW entrance.
2020 Sherwood Dr.
Open Mon-Wed & Sat 10am-6pm
Thurs-Fri 10am-8pm
Sun & Holidays 11am-5pm
780-467-7766 5 min from Edmonton

STRATHCONA COUNTY

#strathco



Sticker Station -

Strathcona Wilderness Centre
52535 Rg Rd 212
Open daily 9am-4:30pm
780-922-3939

30 min from Edmonton

TOWN OF VEGREVILLE

#explorevegreville



Sticker Station -

Visitor Information Centre
4500 Pysanka Ave.
Open Mon-Wed 9am-5pm
Thurs-Sun 9am-8pm
780-632-6800

1 hr from Edmonton

VILLAGE OF MANNVILLE

#mannville



Sticker Station -

Confectionery 881
5127 - 47 St.
Open Mon. - Sat 11 am - 9 pm
Sun Noon-9pm
780-853-7306

1 hour 45 min from Edmonton

TOWN OF VERMILION

#explorevermilion



Sticker Station -

Visitor Information Centre
4606 - 52 St.
Open daily 9am-5pm
780-853-4511

2 hrs from Edmonton

VILLAGE OF KITSCOTY

#kitscoty



Sticker Station -

Farmstead Market & More
4908 - 50 St.
Open Mon-Wed, Fri 10-6pm
Thurs 10-8pm, Sat 11-5pm
Sun. Main Street Scoops
next door Noon-9pm 780-205-3961
2 hrs and 15 min from Edmonton

FORT SASKATCHEWAN

#cityfortsask



Sticker Station -

Dow Centennial Centre
8700 - 84 St.
Open Mon-Fri 8am-9pm
Sat-Sun 8am-8pm
780-992-6400

15 min from Edmonton

TOWN OF BRUDERHEIM

#bruderheim



Sticker Station -

Bruderheim Shell
4804 - 48 Ave.
Open daily 8am-9pm
780-796-3349

30 min from Edmonton

TOWN OF LAMONT

#lamont



Sticker Station -

Lamont Petro Canada
5411 - 50 Ave.
Open daily 8am-9pm
780-895-7659

45 min from Edmonton

TOWN OF MUNDARE

#mundare



Sticker Station -

Baba's Bistro
5215 - 50 St.
Open daily 8am-6pm
780-764-2226

45 min from Edmonton

VILLAGE OF ANDREW

#andrew



Sticker Station -

Andrew Gas Bar
5211 - 50 St.
Open daily 8am-9pm
780-365-3553

1 hr from Edmonton

TOWN OF TWO HILLS

#twohills



Sticker Station -

Fas Gas
5101 - 54 Ave.
Open daily 8am-9pm
780-657-2331

1.5 hrs from Edmonton

VILLAGE OF MYRNAM

#myrnam



Sticker Station -

Myrnam Convenience Store
4814 - 50 Ave.
Open Mon-Sat 9am-9pm
Sun 10am-6pm
780-366-2064

1 hr and 45 min from Edmonton

HAMLET OF CLANDONALD

#clandonald



Sticker Station -

Clandonald Country Store
113 Centre St.
Open Mon-Fri 9:30am-4pm
Sat 10am-2pm, Sat afternoon
& Sun: Sticker dispenser available.
780-853-8339
2 hrs and 15 from Edmonton

VILLAGE OF MARWAYNE

#marwayne



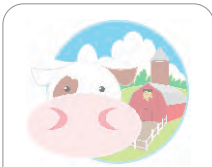
Sticker Station -

Kat Tracks Sweet Shop
20 Railway Ave.
Open Mon-Fri 9am-7pm
Sat 9am-8pm Sun 11am-5pm
780-847-4405

2.5 hrs from Edmonton

Note: Due to inclement weather - station hours are subject to change without notice.

Camrose County



county.camrose.ab.ca

Town of Daysland



daysland.ca

Village of Donalda



village.donaldal.ab.ca

Village of Forestburg



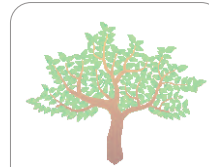
forestburg.ca

Town of Killam



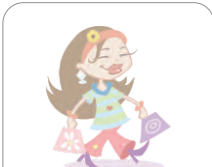
town.killam.ab.ca

Town of Sedgewick



sedgewick.ca

City of Camrose



explorecamrose.ca

Village of Hay Lakes



villageofhaylakes.com



SOUTHEAST OF EDMONTON

Over \$6000 in Prizes! 3 WAYS TO WIN

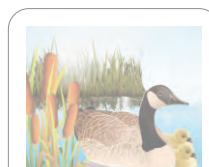
1. Collect stickers and enter partial or completed gameboards
Take a close up photo of your Gameboard and upload it to:
www.GoRoadtripGame.ca
2. Post your trip daily with our hashtags for monthly and bonus prizes:
Use #goroadtrips2022 and #goeastofedmonton
3. Your trip photos will be automatically be entered in our 2022 Photo Contest (using our hashtags)

Complete Game Rules
& Prize Details:
www.GoRoadtripGame.ca



go 2022

Town of Tofield



tofieldalberta.ca

2022

SIGN YOUR
GAMEBOARD
HERE

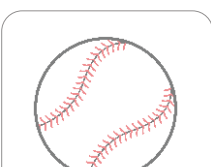
Name of Player: _____

Town of Wainwright



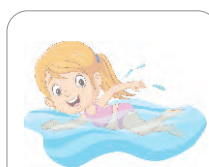
wainwright.ca

Village of Irma



irma.ca

Beaver County - East



beaver.ab.ca

Town of Viking



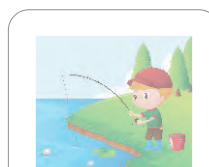
viking.ca

Village of Ryley



ryley.ca

Beaver County - West



beaver.ab.ca

go SOUTHEAST OF EDMONTON

STICKERS STATIONS: Collect stickers at these locations for your gameboard

Enter using [#goroadtrips2022](#) and [#goeastofedmonton](#)

For Complete Game Rules & Prize Details: www.GoRoadtripGame.ca

VILLAGE OF RYLEY

[#riley](#)

Sticker Station -

Ryley Foods
5011 - 50 St.
Open Mon-Fri 9am-8pm
Sat 9am-7pm
Sun: Sticker dispenser available.
780-663-3535
1 hr from Edmonton



TOWN OF VIKING

[#viking](#)

Sticker Station -

Viking Golf & Country Club
4431 - 55 Ave.
Open daily till 9pm
780-336-3424



1.5 hrs from Edmonton

BEAVER COUNTY - EAST

Sticker Station -

Camp Lake Park Campground
(east of Viking & north of Kinsella)
From Hwy 870 or 619 turn north
on Rg Rd 112. Open Mon-Sat
10am-8pm, Sun 10am-6pm
780-336-3414
1.5 hrs from Edmonton



TOWN OF TOFIELD

[#tofield](#)

Sticker Station -

Chill and Grill Café
5208 - 50 St.
Open daily 9am-9pm
780-662-2819



45 min from Edmonton

BEAVER COUNTY - WEST

Sticker Station -

Black Nugget Lake Campground
49117 Rge Rd 182
(southeast of Tofield)
Open Mon - Sat 10am-8pm
Sun 10am-6pm 780-663-2421
1 hr from Edmonton



VILLAGE OF IRMA

[#irma](#)

Sticker Station -

Irma Golf Club
Fro 53 Ave in Irma go east to
92014 Twp Rd 455
Open daily 8:30am-7:30pm
780-754-2184



1 hr and 45 min from Edmonton

TOWN OF WAINWRIGHT

[#wainwright](#)

Sticker Station -

Dobbin's Candy Store
214 - 10 St.
Open Mon-Wed 10-5pm
Thurs-Sat 10-7pm
Sun 12-5pm



2 hrs and 15 min from Edmonton

VILLAGE OF HAY LAKES

[#haylakes](#)

Sticker Station -

Hay Lakes Tempo Gas Strn.
Railroad Ave.
Open Mon-Fri 8am-7pm
Sat-Sun 9am-6pm
780-640-1161



30 min from Edmonton

CITY OF CAMROSE

[#explorecamrose](#)

Sticker Station -

Wild Rose Co-op Gas Bar -
Downtown location only
4818 - 51 St.
Open daily 8am-9pm
780-672-8683



1 hr from Edmonton

CAMROSE COUNTY

[#camrosecounty](#)

Sticker Station -

Buckskins Emporium
6 miles NE of Camrose. From Hwy
833 go east on Twp Rd 474 to
19453.
Open daily 10am-5pm
780-672-0953



1 hr and 15 mins from Edmonton

VILLAGE OF DONALDA

[#donalda](#)

Sticker Station -

Donalda Museum
5001 Mainstreet
June Mon-Fri 8am-3pm
Sat.-Sun: Sticker Dispenser
July-Aug daily 10am-5pm
403-883-2100



1 hr and 40 min from Edmonton

VILLAGE OF FORESTBURG

[#forestburg](#)

Sticker Station -

Forestburg Golf Club
5401 - 50 Ave.
Open daily till 9pm
780-582-3693



1 hr and 45 mins from Edmonton

TOWN OF DAYSLAND

[#daysland](#)

Sticker Station -

Daysland Golf Club
5538 - 50 St.
Open daily till 9 pm
780-374-3633



1 hr and 15 mins from Edmonton

TOWN OF KILLAM

[#killam](#)

Sticker Station -

Wild Rose Co-op Grocery
5026 - 50 St.
Open Mon-Fri 8am-8pm
Sat-Sun 8am-6pm
780-385-3666



1.5 hrs from Edmonton

TOWN OF SEDGEWICK

[#sedgewick](#)

Sticker Station -

Wild Rose Co-op Food Store
4857 - 47 St
Daily 8am-6pm
780-384-3972



1 hr and 45 mins from Edmonton

TOWN OF HARDISTY

[#hardisty](#)

Sticker Station -

Hardisty Lakeview Golf Course
4807 - 49 St.
Open daily till 9pm
780-888-2288



2 hrs from Edmonton



Note: Due to inclement weather - station hours are subject to change without notice.



Drink, Eat, Shop!

SAVE NOW

with the **ROADTRIP SAVINGS PASS**

Unlock discounts at local attractions, restaurants and shops with our FREE savings pass.

HOW IT WORKS



1. Sign up for FREE!

It's fast & easy!

www.GoEastofEdmonton.com



2. You'll instantly get the Pass on your phone full of deals & discounts at over 100 Businesses.



3. Press Redeem in-store and show the cashier to receive your Savings.

4. Every check-in and redemption enters you in for Bonus Prizes worth over \$500!



Stay up-to-date at



@GoEastofEdmonton



Check out our Shopping & Dining Guides and the Drink, Eat, Shop Stories at

www.goeastofedmonton.com/drink-eat-shop/